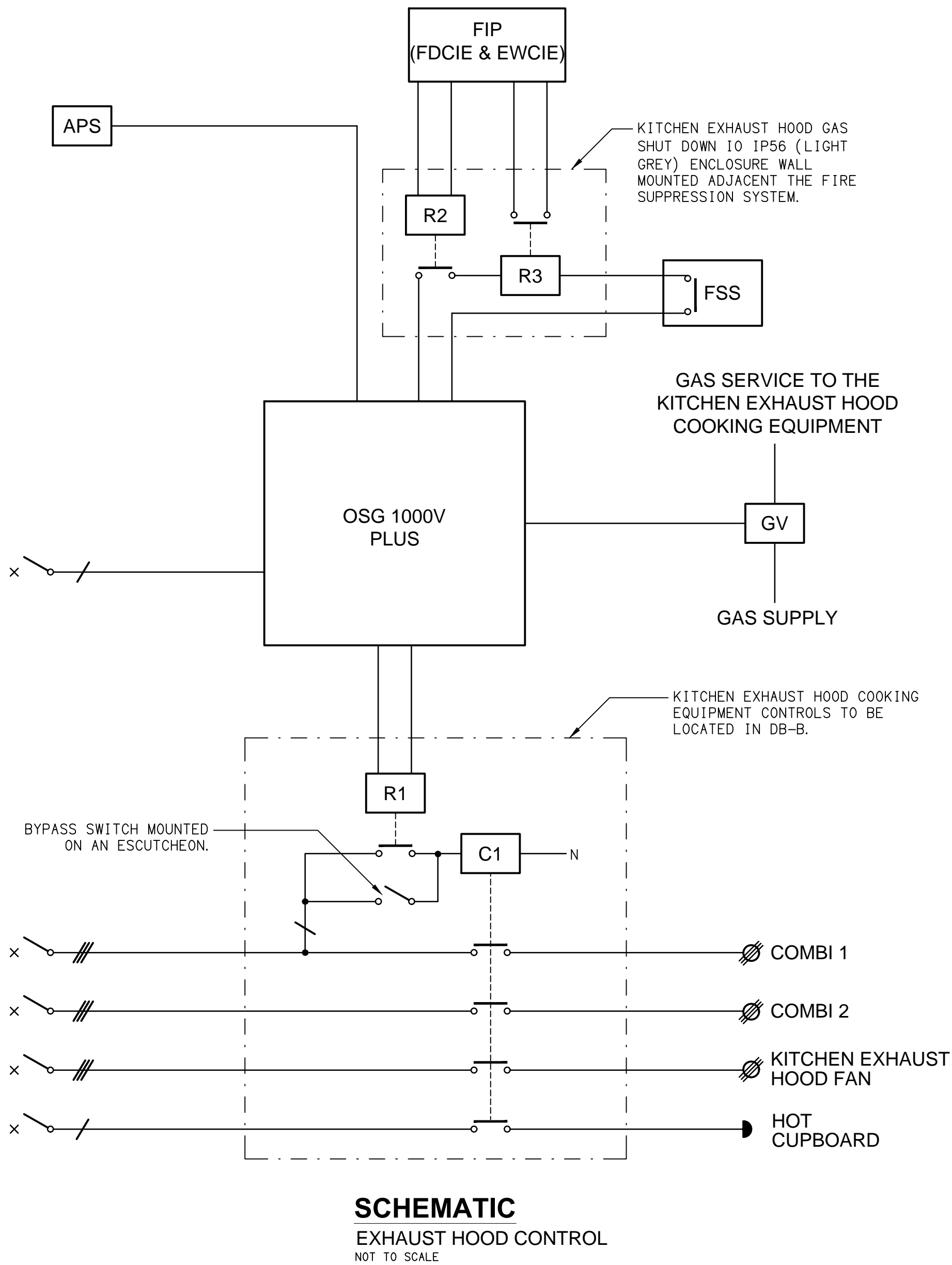


LEGEND

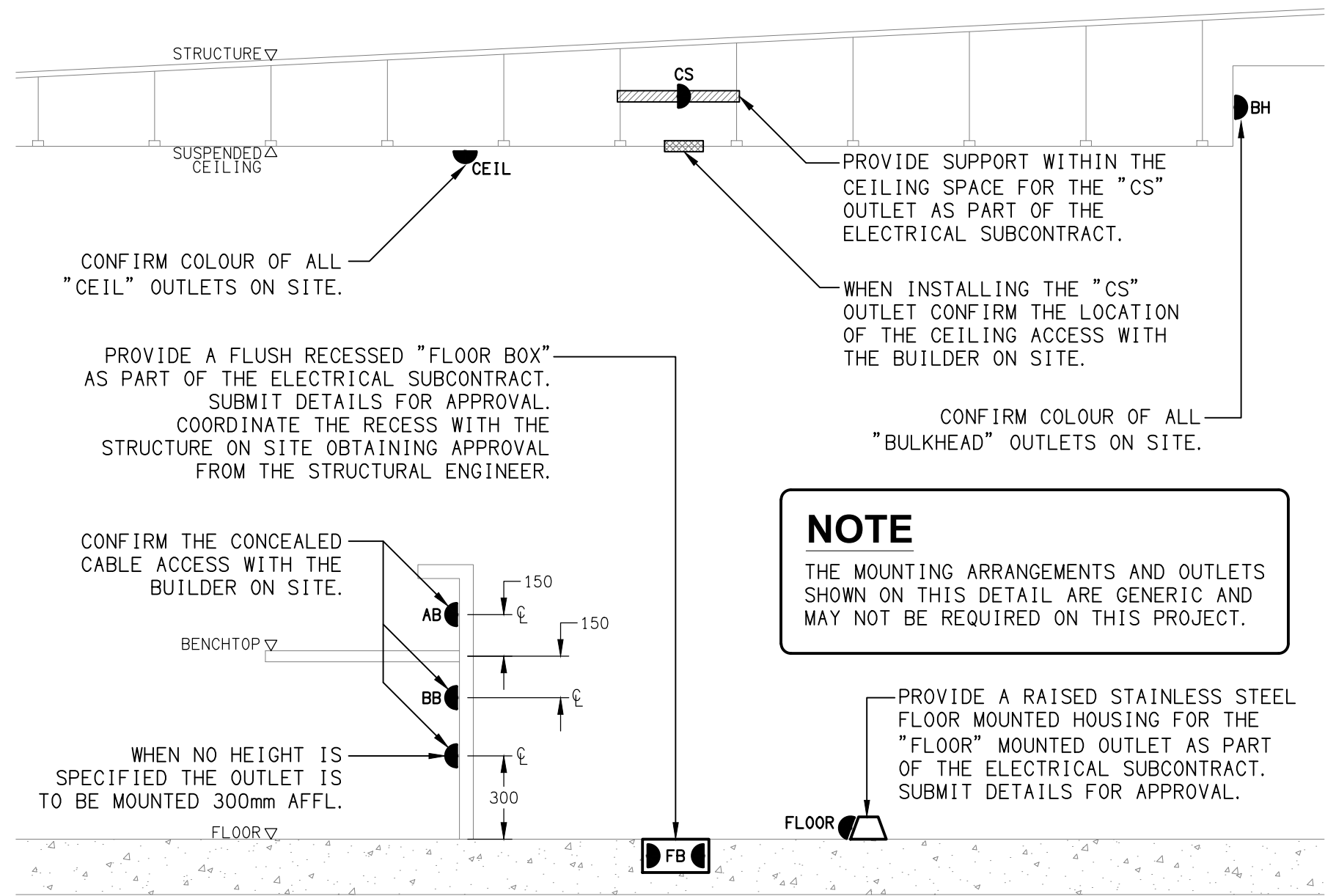
- ELECTRICAL SERVICES SWITCHBOARD.
- SWITCHBOARD / CONTROL PANEL NOT PROVIDED AS PART OF THE ELECTRICAL SUBCONTRACT.
- SINGLE POWER OUTLET.
- DOUBLE POWER OUTLET.
- DOUBLE POWER OUTLET C/W USB CHARGING PORTS.
- GAMING / TAB OUTLET BY GAMING ELECTRICIAN.
- SIGNAGE CONNECTION.
- SINGLE PHASE ISOLATOR.
- THREE PHASE ISOLATOR.
- CONDUIT ROUTE.
- HAND DRYER CONNECTION.
- LIGHTING CONTROL SWITCHPANEL, TYPE x.
- CIRCUIT LINE.
- SWITCH LINE.
- POWER CIRCUIT DESIGNATION. DENOTES DB AND CIRCUIT.
- LIGHTING CONTROL CHANNEL REFERENCE.
- ELECTRICAL EQUIPMENT AS NOTED.
- REFER TO DETAIL NOTED FOR THE AREA SHOWN HATCHED. ADDITIONAL OUTLETS & FITTINGS MAY BE SHOWN ON DETAIL.
- FIRE SUPPRESSION SYSTEM INTERFACE.
- GAS VALVE ASSEMBLY.
- RELAY x.
- CONTACTOR x
- AIR PRESSURE SWITCH.
- KITCHEN EXHAUST HOOD CONTROL SYSTEM.
- FIRE INDICATOR PANEL.
- SURFACE MOUNTED SMOKE DETECTOR, WHITE.
- CONCEALED SPACE SMOKE DETECTOR.
- SURFACE MOUNTED THERMAL DETECTOR, WHITE. TYPE AS NOTED.
- DUCT PROBE THERMAL DETECTOR.
- RECESSED FIRE ALARM SPEAKER, WHITE.
- SURFACE MOUNTED FIRE ALARM HORN.
- Sx: LED JOINERY / CEILING STRIP LIGHT, TYPE AS NOTED.
- E1: GENERAL RECESSED LED EMERGENCY LIGHT, WHITE.
- EX: EMERGENCY LED EXIT LIGHT, WHITE.
- PD01: DECORATIVE BISTRO SUSPENDED PENDANT.
- PD02: DECORATIVE BAR COUNTER SUSPENDED PENDANT.
- PD03: DECORATIVE GAMING SUSPENDED SMALL PENDANT.
- PD04: DECORATIVE GAMING SUSPENDED MEDIUM PENDANT.
- PD05: DECORATIVE GAMING SUSPENDED LARGE PENDANT.
- PD06: DECORATIVE BISTRO SUSPENDED PENDANT.

LEGEND

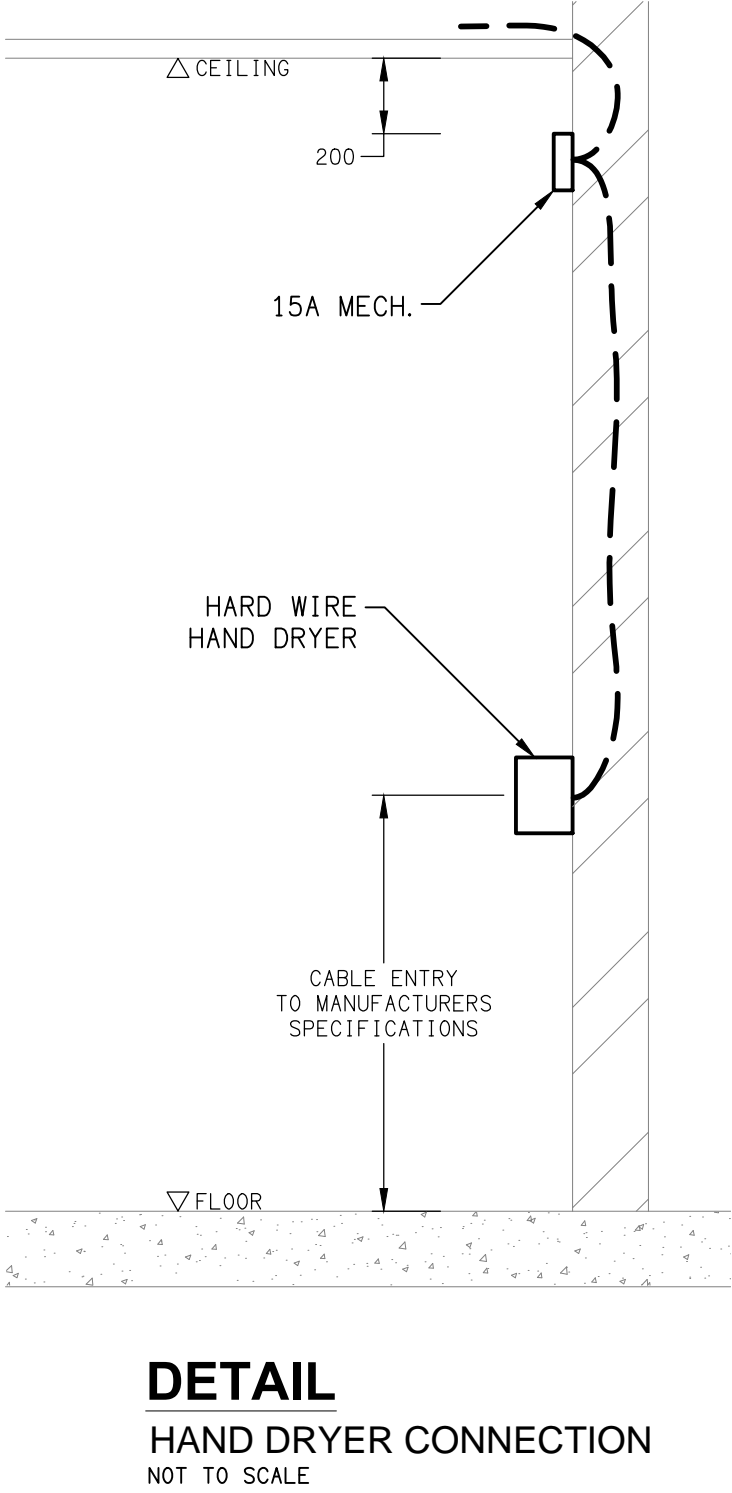
- L1: CAN BAR RECESSED DOWNLIGHT, WHITE.
- L2: KITCHEN 300 X 1200 RECESSED LED TROFFER.
- L3: WALL MOUNTED COOL ROOM STATUS INDICATOR.
- L4: SURFACE MOUNTED COOL ROOM / FREEZER 1200 BATTEN.
- L5: AMENITY RECESSED DOWNLIGHT, WHITE.
- L6: GENERAL AREA RECESSED DOWNLIGHT, WHITE.
- L7: LOW OUTPUT RECESSED DOWNLIGHT, WHITE.
- L8: EXTERNAL ENTRY RECESSED DOWNLIGHT, WHITE.
- L9: TRACK MOUNTED ADJUSTABLE FLOOD LIGHT. WHITE.
- L10: GAMING RECESSED DOWNLIGHT, WHITE.
- L11: WALL MOUNTED CAN DOWNLIGHT, WHITE.
- L12: ADJUSTABLE STAGE SPOT LIGHT.
- L13: POLE MOUNTED FLOOD UP LIGHT, SILVER.
- L14: KIDS ROOM RECESSED DOWNLIGHT, WHITE.
- WL01: VERANDAH COLUMN LIGHT.
- WL02: EXTERNAL WALL LIGHT.
- WL03: DECORATIVE LOUNGE WALL LIGHT.
- WL04: AIR LOCK BEAM MOUNTED WALL LIGHT.
- FS01: FESTOON LIGHTING FIXED TO STAINLESS STEEL SUPPORT, BLACK.
- F1: CEILING FAN.
- HL1: HEAT LAMP.
- HL2: HEAT LAMP.



SCHEMATIC
EXHAUST HOOD CONTROL
NOT TO SCALE



DETAIL
TYPICAL OUTLET MOUNTINGS
NOT TO SCALE



DETAIL
HAND DRYER CONNECTION
NOT TO SCALE